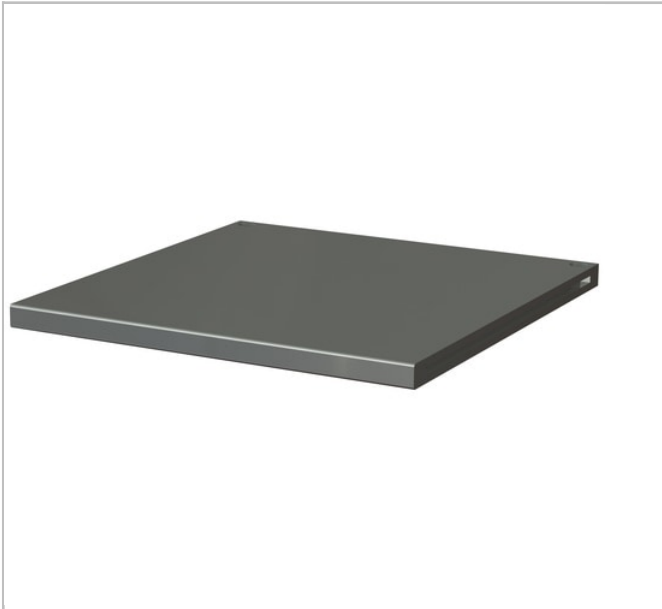


## Jetline+ wooden and stainless worktop corner



### Description:

- Panel made of multi-ply beech of thickness 40 mm covered with 10/10th 304L brushed stainless steel for improved impact and heat resistance
- KEY POINTS (edge also covered - painted metal cover for the sides). Sides will be protected by a finishing painted metal sheet.
- Fast and easy assembly thanks to pre-drilled metallic inserts positions.
- Capable of supporting loads: 500 kg.

	Depth [mm]	Length L [mm]	Height H [mm]	Weight [Kg]
JLS2-PBST1	805.0	727.0	40.0	22.6